

2019 BOND

UPDATE

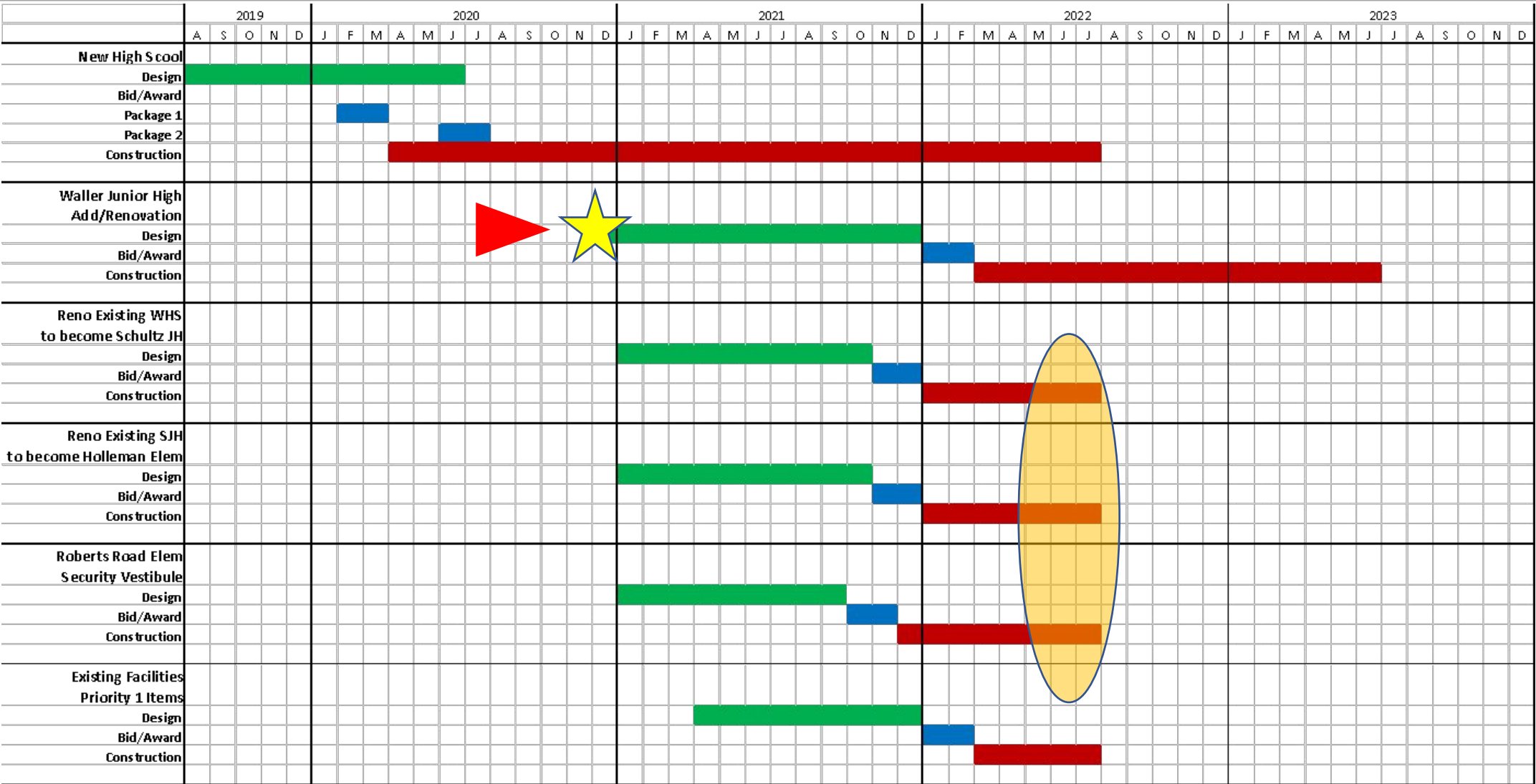
February 2021



Project Budgets

New Waller High School	\$ 195,019,130
Waller JH Renovation & Addition	\$ 61,922,314
Schultz Junior High (renovate existing WHS)	\$ 7,104,030
Holleman Elementary (renovate Schultz JH)	\$ 3,674,716
Roberts Road Elementary Vestibule	\$ 978,242
Other campus renovations (Priority 1)	\$ 3,231,093
Others (buses, tech., land, etc.)	\$ 23,295,476
TOTAL	\$ 295,225,000

2019 Bond Planning Schedule



2019 Bond Project Update

- ❖ **New Waller High School** - under construction and 37% complete for August 2022 opening.
- ❖ **Waller Junior High School Renovations and Additions** – Design Development 80% complete for April Board presentation and construction scheduled for August 2023 completion.

Projects beginning with VLK Architect designing, and scheduled for August 2022 completions

- Schultz Junior High Renovations of WHS
- Holleman Elementary Renovations of SJH
- Roberts Road Elementary Vestibule and Renovations

Schematic Design

WALLER JUNIOR HIGH ADDITIONS & RENOVATIONS

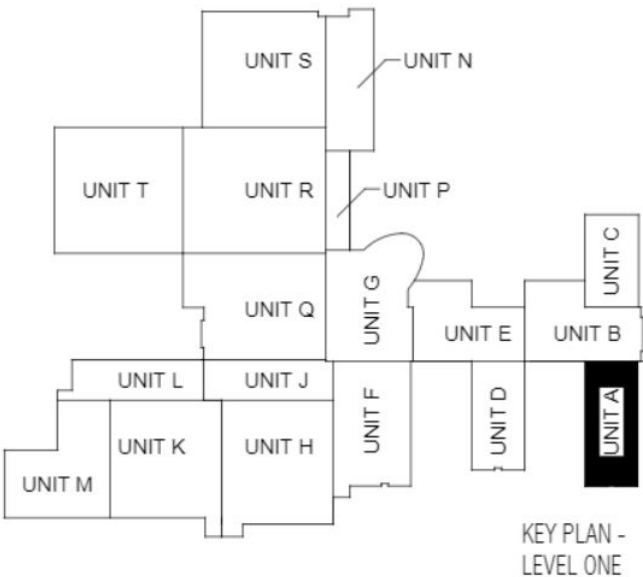
Level One Floorplan



NEW HIGH SCHOOL CONSTRUCTION UPDATE



New Waller High School



Floor Plan

New Waller High School



East Elevation from Student Parking

New Waller High School

Exterior Masonry Started



New Waller High School

Exterior Framing and Window Frames/ Glazing



New Waller High School

Interior Framing, MEP, and Gypsum

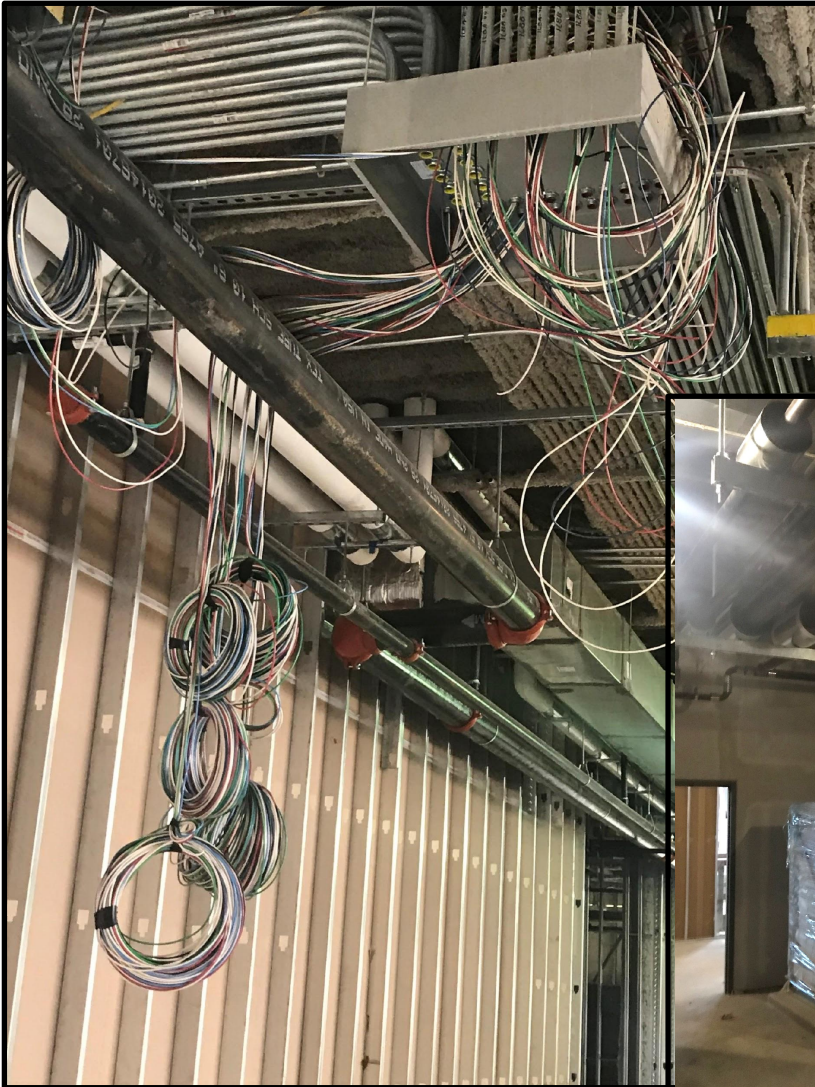


New Waller High School



Main Gym and Auxiliary Gyms

New Waller High School



MEP Rough-in

New Waller High School



**Front Entry and
Auditorium Lobby**

New Waller High School



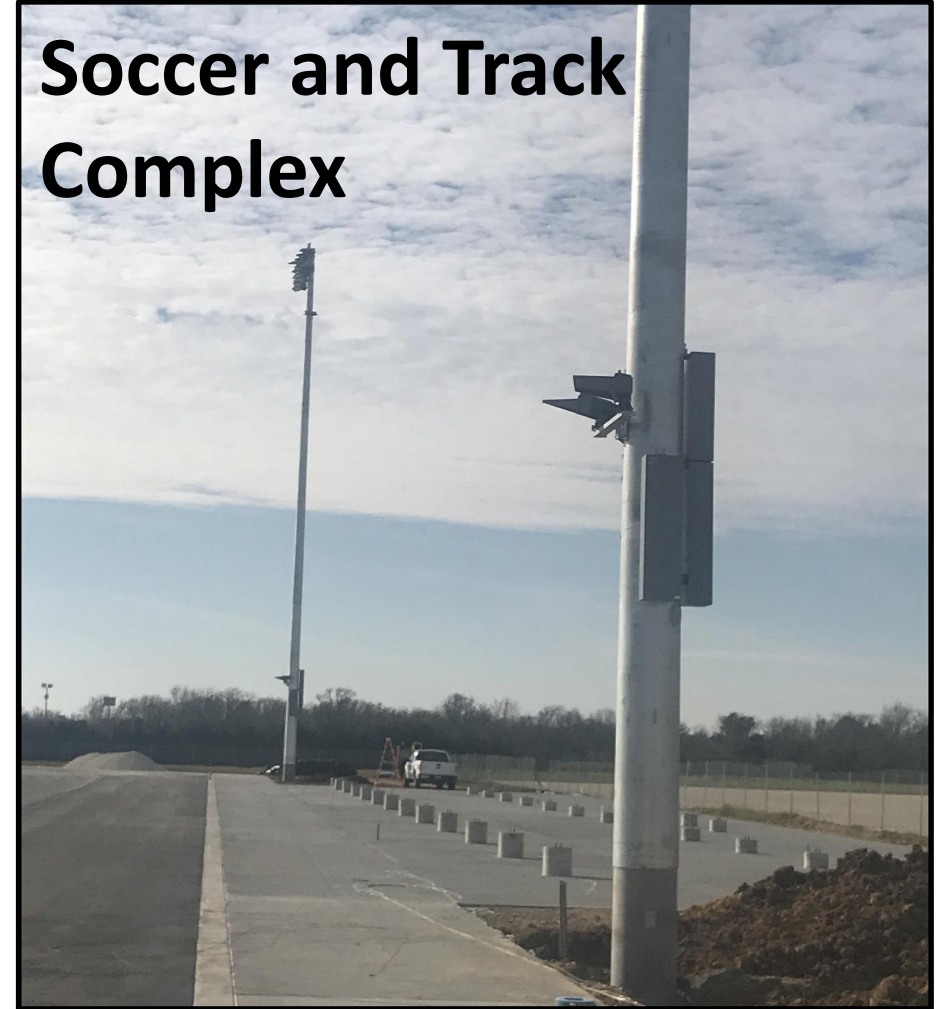
Field House Renovations

New Waller High School

60 yard Synthetic Practice Field



Soccer and Track Complex



New Waller High School Video



<https://vimeo.com/508240737/f90210681d>

Project Update - New Waller High School

Construction Activity Status

- Building Steel Erection – Complete, still detailing
- Stormwater Pump Station % complete
- Fire Proofing – ongoing in Areas
- Metal Roof Deck – 70% complete, following steel erection
- MEP Interior rough-in - ongoing
- Interior CMU block walls started in Gym and Athletic areas
- Exterior Brick has started on East face
- Metal wall framing and gypsum on going
- Window Frames/Glass in Areas B and C
- Exterior Commissioning has begun
- Field House Renovation demo has started
- Track and Soccer Complex has lights installed and bleacher to arrive in February

Thank You!

